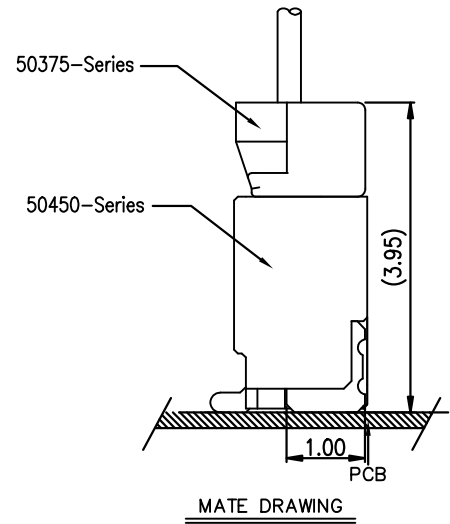
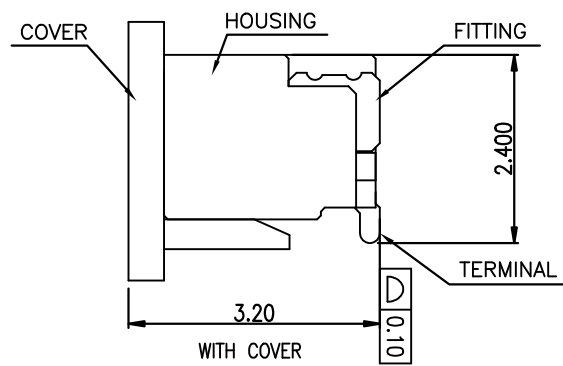
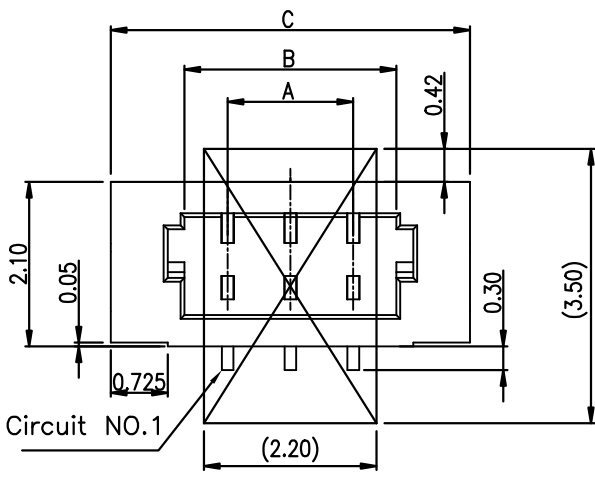
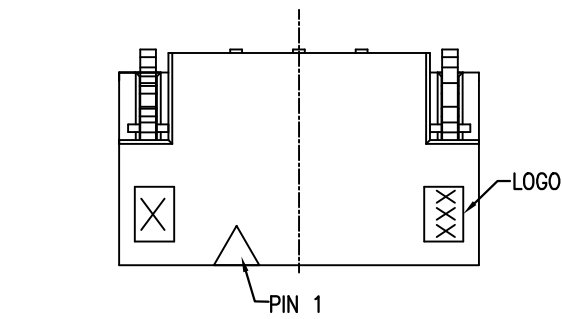
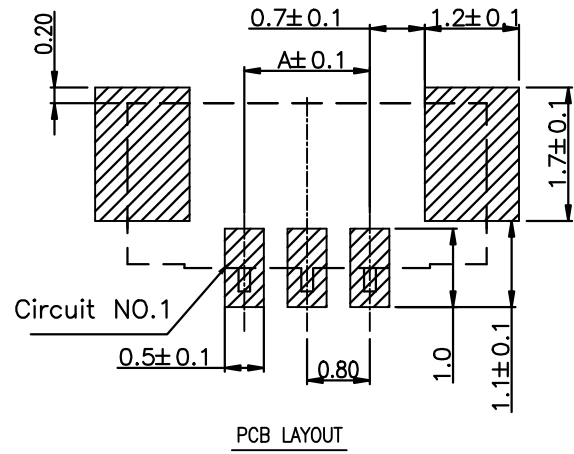


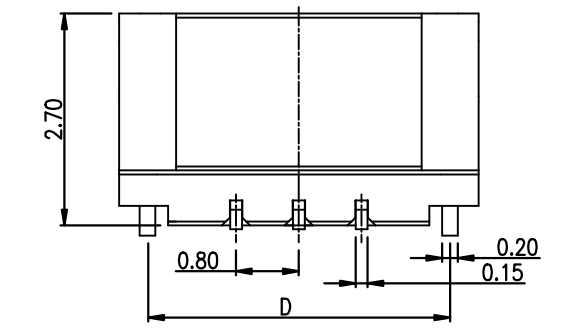


- NOTES:
- MATERIAL:
 - HOUSING: Halogen Free PLASTIC, HIGH TEMP. UL94V-0
 - TERMINAL: PHOSPER BRONZE (t=0.15)
 - FITTING NAIL: BRASS (t=0.2)
 - PLATING:
 - CONTACT:
 - 1: GOLD FLASH ON CONTACT AREA
 - N: 80u" MIN MATT TIN ON CONTACT AREA
 - A: 3u" GOLD ON CONTACT AREA
 - C: 15u" GOLD ON CONTACT AREA
 - T: 10u" GOLD ON CONTACT AREA & GOLD FLASH ON SOLDER AREA
 - SOLDER:
 - 1: GOLD FLASH ON SOLDER AREA
 - N: 80u" MIN MATT TIN ON SOLDER AREA
 - A: GOLD FLASH ON SOLDER AREA
 - C: GOLD FLASH ON SOLDER AREA

- FITTING NAIL:
- 1: GOLD FLASH ON SOLDER TAILS
 - N: 80u" MIN MATT TIN ON SOLDER TAILS
3. SPECIFICATION PLS. SEE PS-50208-XXXX-XXX
4. PACKING REFER TO 88459-XXXX-TRP
- P/N LEGEND
- 50450-XXX X X-XXX
- | XXX | HOUSING COLOR | HOUSING MATERIAL | COVER COLOR | LOGO | Packing |
|-----|---------------|------------------|-------------|------|----------------|
| 001 | BLACK | PMT | BLACK | ACES | 88459-XXXX-TRP |
| 002 | BLACK | LCP | BLACK | ACES | 88459-XXXX-TRP |
- NO OF CKT
- PACKING
- 4: TAPE & REEL (WITH MYLAR)
 - 7: TAPE & REEL (WITH COVER)
 - 8: TUBE (WITH COVER)
- PLATING
- 1: GOLD FLASH
 - N: MATT TIN
 - A: 3u" GOLD ON CONTACT AREA
 - C: 15u" GOLD ON CONTACT AREA
 - T: 10u" GOLD ON CONTACT AREA



CKT	Dim A	Dim B	Dim C	Dim D
2	0.80	1.90	3.78	3.04
3	1.60	2.70	4.58	3.84
4	2.40	3.50	5.38	4.64
5	3.20	4.30	6.18	5.44
6	4.00	5.10	6.98	6.24
7	4.80	5.90	7.78	7.04
8	5.60	6.70	8.58	7.84
9	6.40	7.50	9.38	8.64
10	7.20	8.30	10.18	9.44
11	8.00	9.10	10.98	10.24
12	8.80	9.90	11.78	11.04
13	9.60	10.70	12.58	11.84
14	10.40	11.50	13.38	12.64
15	11.20	12.30	14.18	13.44
16	12.00	13.10	14.98	14.24
17	12.80	13.90	15.78	15.04
18	13.60	14.70	16.58	15.84
19	14.40	15.50	17.38	16.64
20	15.20	16.30	18.18	17.44



QUALITY SYMBOLS MAJOR CRITICAL GENERAL TOLERANCES (UNLESS SPECIFIED) X. ±0.5 .X ±0.25 .XX ±0.15 .XXX ±0.1 ANGLES ±2°	DRAWN BY Wan.Bo DATE '23/06/20	
	CHECKED BY XUZHUYONG DATE '23/06/20	
APPROVED BY XUZHUYONG DATE '23/06/20	UNITS mm	SIZE A4
SCALE 1:1		RFO NO. NA
SHEET NO. 1 OF 2	REV N	DWG NO. 50450-XXXXX-XXX



NOTES:

- 1.MATERIAL:
HOUSING: Halogen Free PLASTIC, HIGH TEMP. UL94V-0
TERMINAL:PHOSPER BRONZE(t=0.15)
FITTING NAIL:BRASS(t=0.2)
- 2.PLATING:
CONTACT:
1:GOLD FLASH ON CONTACT AREA
N:80u"MIN MATT TIN ON CONTACT AREA
A:3U" GOLD ON CONTACT AREA
C:15U" GOLD ON CONTACT AREA
SOLDER:
1:GOLD FLASH ON SOLDER AREA
N:80u"MIN MATT TIN ON SOLDER AREA
A:GOLD FLASH ON SOLDER AREA
C:GOLD FLASH ON SOLDER AREA
- FITTING NAIL:
1:GOLD FLASH ON SOLDER TAILS
N:80u"MIN MATT TIN ON SOLDER TAILS
- 3.SPECIFICATION PLS. SEE PS-50208-XXXX-XXX
- 4.PACKING REFER TO 50207-XXXX-TRP

P/N LEGEND

50450-XXX X X-XXX

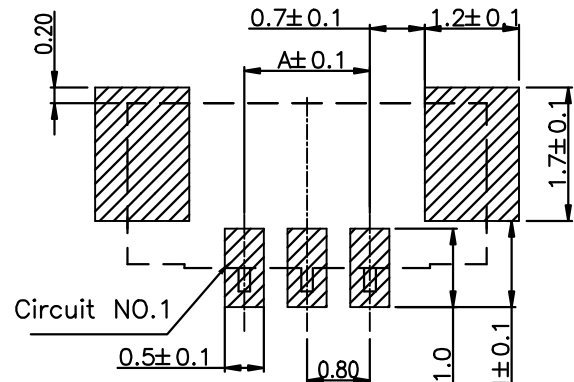
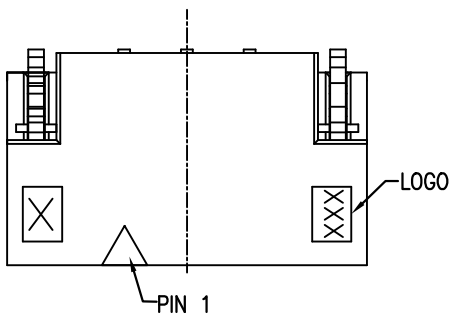
NO OF CKT	XXX	HOUSINGCOLOR	LOGO	Packing
	001	BLACK	ACES	50207-XXXX-TRP
	003	BLACK	ACES	50207-XXXX-U-TRP

PACKING

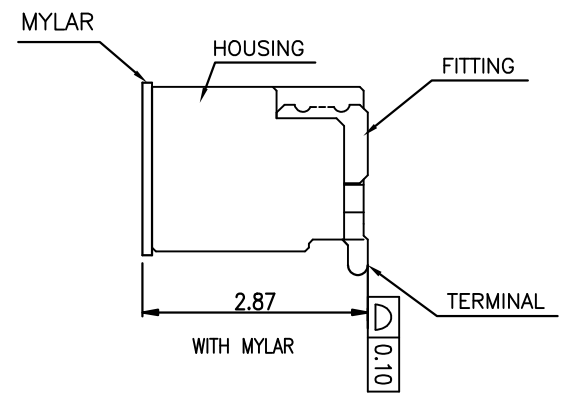
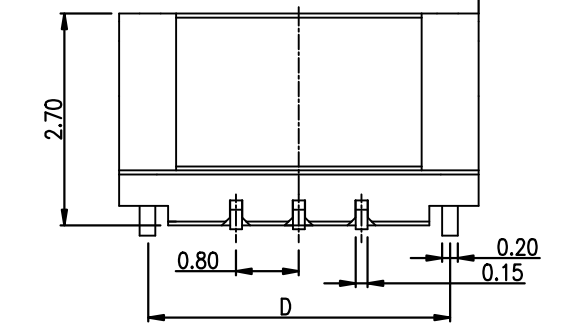
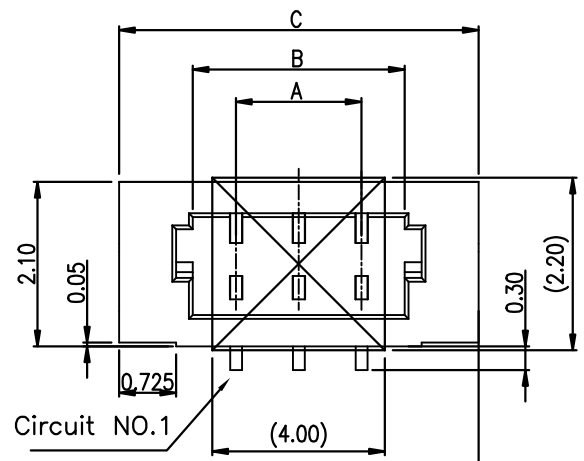
- 0:TAPE & REEL(WITHOUT MYLAR)
- 4:TAPE & REEL(WITH MYLAR)
- 5:TUBE (WITH MYLAR)

PLATING

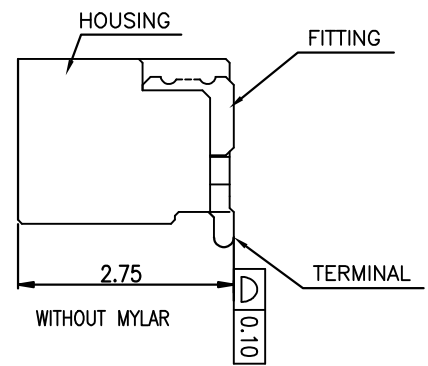
- 1: GOLD FLASH
- N: MATT TIN
- A:3U" GOLD ON CONTACT AREA
- C:15U" GOLD ON CONTACT AREA



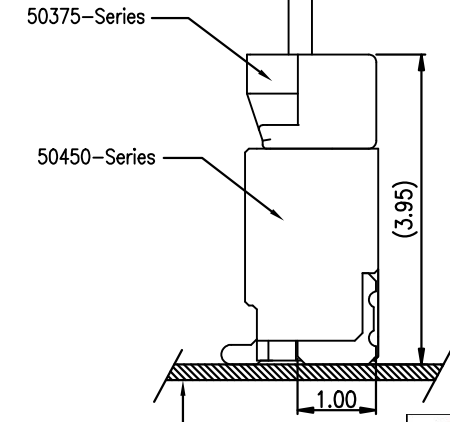
PCB LAYOUT



WITH MYLAR



WITHOUT MYLAR



MATE DRAWING

CKT	Dim A	Dim B	Dim C	Dim D
4	2.40	3.50	5.38	4.64
10	7.20	8.30	10.18	9.44
16	12.00	13.10	14.98	14.24

QUALITY SYMBOLS	DRAWN BY	DATE
MAJOR	Wan.Bo	'23/06/20
CRITICAL	CHECKED BY	DATE
GENERAL TOLERANCES (UNLESS SPECIFIED)	XUZHIYONG	'23/06/20
X. ±0.5	APPROVED BY	DATE
X ±0.25	XUZHIYONG	'23/06/20
.XX ±0.15	UNITS	SIZE
.XXX ±0.1	mm	A4
ANGLES ±2°	SCALE	RFQ NO.
	1:1	RFQ-2306052
	SHEET NO.	REV
	2 OF 2	N
	DWG NO.	
		50450-XXXX-XXX

ACES ELECTRONICS

TITLE: 0.8mm Pitch WTB Header SMT S/T TYPE

RFQ NO. RFQ-2306052

REV N

DWG NO. 50450-XXXX-XXX